

THE ESSENTIAL PATIENT  
COMMUNICATION TOOL

oravisor

SOFTWARE OF  
EXCELLENCE  
A HENRY SCHEIN® COMPANY



# Engage, Communicate and Educate

Oravisor increases treatment acceptance across all dental disciplines by making it simple to create personalised multi-media presentations.

- Enhance treatment plans and presentations
- Improve patient communication

- Increase treatment uptake
- Enhance your practice's reputation



# oravisor

---

The better a patient understands the more likely they are to commit to their treatment plan.

---

Patients who clearly understand diagnoses and treatment options are more likely to agree to care plans and to see them to conclusion.

Oravisor provides a rich library of interactive, highly detailed 3D animations that help dentists to help patients to understand their options and to engage fully in discussing their treatment plan.

With the ability to pause, draw and add annotations to areas of focus and to combine the patient's own intra-oral and digital images to create convincing personalised case presentations, Oravisor is an essential communication tool for your practice.

Using Oravisor is easy. With its intuitive layout and easy to use functionality, you are able to convey your message and gain understanding and agreement quickly and effectively. And that means more involved patients and more time to treat them.

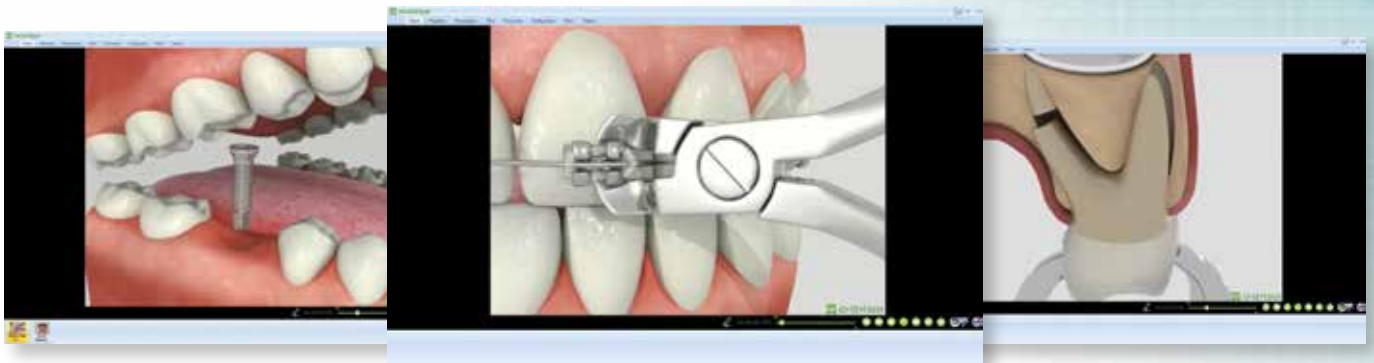
---

→ See how Oravisor can help in your practice

# Improving Patient Education and Communication

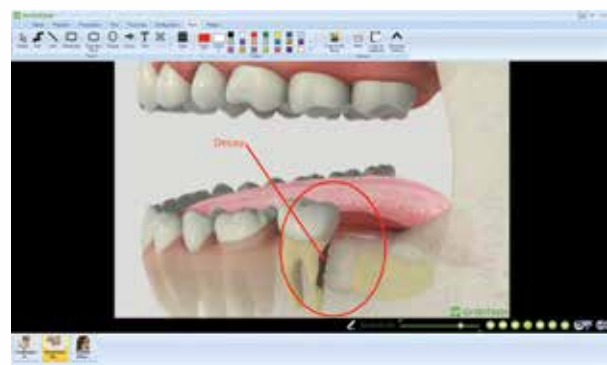
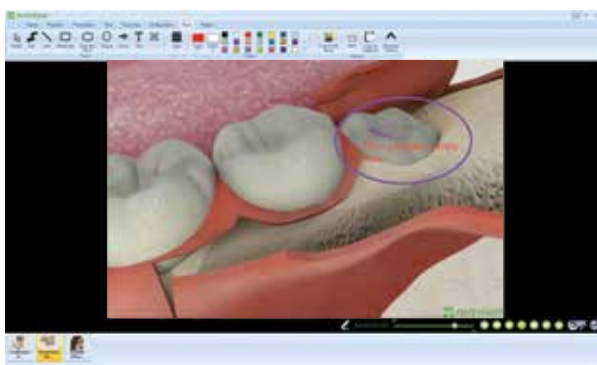
## 3D Animations:

Oravisor offers a comprehensive library of state of the art, clinical animations. Developed to aid communication of procedures, Oravisor covers a wide range of topics, from general dentistry through to specialist subjects such as orthodontics, implantology, oral surgery and much more.



## Pause, Draw and Explain:

Engage patients by providing a personal experience when explaining treatment options. With the ability to pause, draw and annotate on any animation, patients will be able to better understand the importance of the dental procedure resulting in a higher uptake of treatments.



## Personalised Treatment Plans:

Create personalised treatment plans for your patients by integrating audio, animations and photos from Oravisor into your clinical case presentations. Supplement these with digital images of the patients own teeth.

## Integrates with EXACT:

Oravisor is integrated with **EXACT**; the world-leading dental practice management software to allow you to launch treatment plan presentations directly from a patient's record.



### Intuitive Interface:

---

Oravisor provides an intuitive interface making it easy to learn and easy to use.

### Customisable Presentations

---

Create a customised playlist or presentation for your waiting room and boost your visual brand throughout the practice.

### New Animations

---

The on-going development of new videos in collaboration with leading specialists (in orthodontics, implants, periodontics, etc.) will help you to continually improve communication with your patients.

### Key Features

- High-definition 3D animations
- Includes: Hygiene, Periodontics, Implants, Endodontics, Restorative, Orthodontics, Fixed Prostheses, Removable Prostheses, etc.
- Create personalised presentations
- Integrates with Exact
- Automatic playback mode for the waiting room
- Favourites menu
- Printable animations for offline reference
- Preview animations from the menu
- Search by keywords
- Easy and intuitive
- Clinically precise
- Designed to work on a network

## CONTACT US TO BOOK A DEMO:

---

Call our team today for a short demonstration of Oravisor and see how it will enhance acceptance of your of treatment plans.

WEB: [soeidental.com](http://soeidental.com) EMAIL: [sales@soeidental.com](mailto:sales@soeidental.com) TEL: 0845 345 5767

### SOFTWARE OF EXCELLENCE LIMITED

---

ADD: Eclipse House, Eclipse Park  
Sittingbourne Road  
Maidstone  
Kent ME14 3EN

WEB: [www.soeidental.com](http://www.soeidental.com)

EMAIL: [sales@soeidental.com](mailto:sales@soeidental.com)

TEL: 0845 345 5767